



FRIENDS OF
JOHN LEIGH PARK



Newsletter *Autumn 2022*

Our Lovely Park

We have the wonderful resource of the space, the trees and the plants of the park – based on the heritage of the Oldfield Hall Estate. All praise to our volunteer gardeners whose regular contributions complement those of the Amey teams. The plants of the Ornamental Garden, (below), and Dawn's bank, (above), have been spectacular and are in transition to something even more ambitious.





The weekly support of students on the **Duke of Edinburgh Award scheme** is invaluable to us – and a good experience for them. They help with the aviary and with all sorts of jobs around the park (and a little beyond).

Green Flag status has been retained, the assessor making many complimentary and helpful comments during his visit, as did the assessor for North West in Bloom (In Your Neighbourhood).



Devonshire Road Church
 Devonshire Road, Broadheath
 0161 929 9364
www.altrincham-evangelicalchurch.org

ALL WELCOME

REGULAR SERVICES

Sunday	10 am	Communion <i>(except 1st Sun of month)</i>
	11 am	Morning service <i>(including Sunday Club)</i>
Tuesday	10.30 - 12	Prayer & Bible study
Weds	10.30 - 12	Take-a-Break ladies coffee morning

**God is our refuge and strength,
 an everpresent help in trouble.
 Psalm 46 verse 1**

LEARN

NORTHWEST

Named Best Private Tuition Company in Greater Manchester 2020

Primary, Secondary, 11+, Entrance Exams
DBS checked ✓

- ✓ **Qualified & experienced private tuition**
- ✓ **Childcare vouchers accepted**
- ✓ **First Aid trained**

Call 0161 706 1014
 visit learnnorthwest.com
 or find & follow us

@learnnorthwest



Tree Damage

Changes in the environment have brought periods of extreme weather – deluges of rain soaking the ground, flooding the paths and sweeping away soil and tree-litter – followed by days at a time of heat beyond our comfort and no rain at all. We have wilted and so have our plants. Even the ancient trees have been tested beyond endurance, especially the wonderful beech trees, several of which have dropped large and alarming branches. One caused damage to the fencing and apparatus of the upper tennis court and Multi Use Games Area

There has been impressive immediate response to these incidents from the Tree Unit but definitive repairs are still to be done. The damaged wall and garages on the east side are only now being repaired following the fall of the huge beech tree there months ago.



These incidents emphasise the potential hazards of life within such a living environment – the benefits of which are sorely needed as a counter to the grimness which we can sometimes find in everyday life.

The Swings Are Back!

The swings were removed as the matting was deemed to be dangerous.

There was a fantastic response from the Trafford MBC/Amey team. A week later the matting has been repaired, and the swings are back in place. We thank them very much.

We have been without the basket swing for more than two years. We hope that it will be replaced.





Tai Chi / Wushu

Learn and Practice In-The-Park
Classes Now Available INDOORS*
*Booking Essential.

Suitable For All Ages | Beginners & Families Welcome

***** 1 WEEK FREE TRIAL *****

mention 'Friends of John Leigh Park' to receive the offer

Easy to follow
Exercises

with all-round benefits to
physical & mental wellbeing



Member of the British Council
for Chinese Martial Arts

taught by **Master Chen DeQing**
3 Times Chinese National University Taiji Champion
5 Times Chinese National University Wushu Champion

Get in touch to book or find out more information.

0782 883 8081 | jinlonguk@gmail.com
www.jin-long.co.uk



The Methodist Church

Altrincham Circuit

Join us for Sunday worship from 10.30am

Altrincham - Barrington Road
Timperley - Stockport Road
Hale - Hale Road
Bowdon Vale - Priory Street (10.45am)

Watch our services online

<https://thesundayservice.gallery.video/altrinchammethodist>

Follow us on Facebook

@Altrincham Methodist Circuit
@Timperley Methodist Church

Visit our cafe at

Altrincham Methodist Church, Barrington Road

Mondays, Tuesdays, Thursday, and Fridays
10am-2pm

WELCOME - WORSHIP - ACTION




The bowling green has survived quite well in the drought and bowling has been sustained over the Spring and Summer months. Tennis goes on and there is free training on Saturday afternoons courtesy of an LTA scheme.

St George's Church

Another link is forged with an invitation to attend the induction service to welcome St George's new vicar – Reverend Claire Corley. I attended as representative of the Friends group. Since that service, we have been in touch and a meeting has been arranged to discuss how the Church might work with community groups. She is certainly welcome. D. Jolley





Summer Events

We have enjoyed some splendid organised events over the Summer: two sessions of **Jamming in The Park**, and a **Teddy Bears' Picnic** in the ornamental garden. This was on one of the hottest days of the Summer, but the trees gave us much needed shade. The Jamming sessions were very enjoyable and lots of people came to enjoy the music. All the organised events were lovely days which feed the soul. Thanks to those who made them possible, and thanks to everyone who came along.

A Teddy Bears' Picnic in the ornamental garden. This was for the little ones and their families and everyone's teddies.



We have a team which cares for the birds and **aviary** in a rota every day of every week. We are very grateful to them for their reliability and hard work. George and Alan secured the parrot in the toddlers' play area and gave him a shiny new coat. They also did some repairs to the roof of the aviary and now it's looking very good. We're grateful to all in the Friends Group who tackle repairs and other initiatives around the park - willing hands and pretty impressive know-how!

Forthcoming Events

Soon we will be hosting the Schools Cross Country Running Events with Altrincham and District Athletic Club: September 24th, October 8th and November 19th

Carols in the Park will be earlier than usual – December 11th – to avoid a clash with the World Cup Final – and we hope there will be an Advent trail too (Carols and Advent trail with Altrincham Baptist Church).



We are struggling with the effects of **Box Moth** on our box hedges. Boxes small and large have been destroyed and haunt the park as staring corpses until they can be removed. Some are being kept in this condition until alternative replacements can be obtained as they provide some protection for other plants. There is a plan and we have some grant monies but it will take time and lots of hard work. Trafford/Amey officers have stepped in with offers of help to remove the box, as this is more than our volunteer gardeners can deal with.



happy kids

Child-led Learning

From 18 months - 5 years

Morning, Afternoon & Full Day Sessions

Early Years Teacher

Indoor/Outdoor Free-flow play areas

All-season Forest School

Ofsted Outstanding

FOREST SCHOOL LEADER
QUALIFIED AT
LEVEL 2
Cambridge Training Network

Find us at St George's Parish Centre, Church Walk, Altrincham WA14 4TT

AT ALTRINCHAM
PRE-SCHOOL PLAYGROUP | Call 07837273357
happykidsaltrincham.co.uk

Indoor and Outdoor Tennis Coaching Lessons

**With fully Qualified, Insured
and DBS Checked Coaches**



- All ages and abilities welcome
- Group and individual lessons
- Cardio Tennis sessions
- Junior groups
- Holiday camps
- Fitness training
- Video analysis available
- Fully Licensed and Insured
- Block booking



**For any information or to book a
session, call Coach Phil on
0777 3738 981 or email
coaching@bowdonltc.com**

CONTACT DETAILS

Tel: 07976018418



johnleighpark



/FriendsofJohnLeighPark



@JohnLeighPark

There is a membership form on our website. Annual membership is £5, Lifetime membership is a one off payment of £50

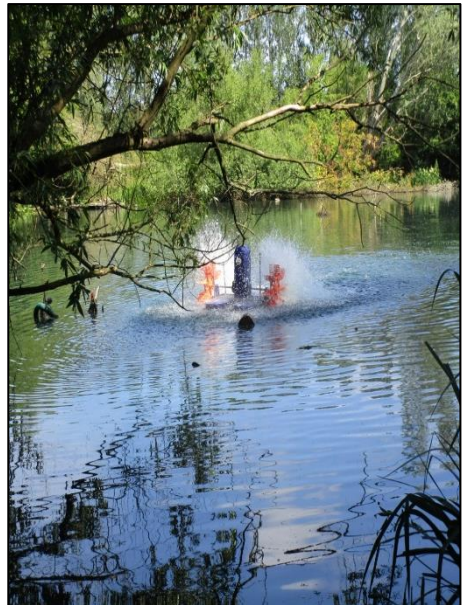
Email:

friendsofjohnleighpark@gmail.com

Website:

www.johnleighpark.org.uk

Regular health walks have happened almost every Monday – and take us short distances from the park. King George V Pool, (photo below), has become a favourite excursion. We meet at 10.30 am at the bowling pavilion most Mondays.



Car Boot Sale

We were able to take two cars to the car boot sale at St Margaret's Church. It is a brilliant day out – meeting people and enjoying their company and the music and refreshments which St Margaret's provides. And we made nearly £300 by sales of items generously donated! Excellent – and this money will be used to keep the park looking good.



We have not been able to run 'Dogs' delight' this year but hope we can next year. The park is busy with dogs and owners. Most are wonderfully responsible but there are some problems where people do not 'clear up' and there are instances when dogs run free and frighten people and other dogs and have damaged planted areas. We do ask that dog people are careful of others and the environment. We are extending the area where we ask that dogs be on leads – so this will be requested for the Bowling Green (as now) and the Ornamental Garden.

We are very aware of the loss of play equipment on both play areas. Some apparatus has been taken out of commission for health and safety reasons. There is an unacceptable wait for replacements. We are constantly in discussion with Trafford MBC and Amey ('One Trafford') about this. Direct approaches from the public and via our Councillors may be useful.

We remain very concerned about security at the Parkfield site which backs on to the park at the top of the hill, and the eyesore that is the Wheatsheaf pub. These leave us at risk of vandalism. We are among those urging responsible resolutions very soon please.

The economic climate has been difficult for many people and is worse now with the rising costs of food and fuel and virtually everything. Financial support for parks and green spaces has been cut severely during recent years of austerity and is further threatened along with all services. We have great respect for the work done by elected councillors, officers and the workforce of Trafford MBC and Amey in these difficult circumstances. We all wish our parks, towns and everything about this country and the wider world to be as good in quality as is possible. What is possible may not be quite what we would wish.

In difficult times, our lovely park offers time and place for peace.

David Jolley September 2022

On September 8th we learned of the death of our Queen Elizabeth. This is the year we have been happy to celebrate her Platinum Jubilee. It is the year we will remember for her passing. She has been held in affection and respect for all these years. Let us hope that the principles she lived by will remain with us.