

Newsletter

Spring 2020



HARTLEY ROAD GATEWAY. THE COST AND THE BENEFIT

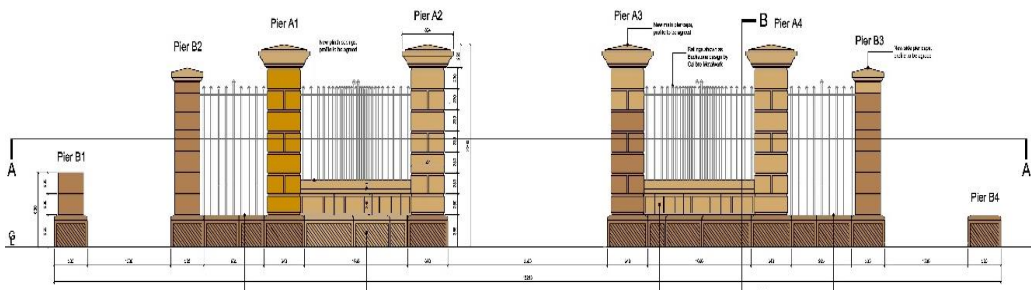


The Friends of John Leigh Park are seeking help to fund the refurbishment of this historic gateway.

We have been unhappy to live these past almost four years with the badly damaged gateway. We were particularly troubled when a travelling community took advantage of the breach to occupy the park during the summer of 2019. But people have wanted something done to make the gateway fit-for-purpose and attractive, for many more years than that.

The gateway was one of the first additions to the park in 1924 – there are no known drawings or photographs of it in its prime but it must have added greatly to the style and dignity of this new civic facility. We know that the gateway was damaged on at least two occasions in the meantime before the 2am catastrophe of August 2016. Neighbours have implored successive councils for action but had no positive response.

The recent budget announcement for Trafford MBC declares a gap of £18.5 million between needs and current income. Recent years of austerity have seen an average 60% cut in council budgets, so that making ends meet has been progressively more difficult. Priority is given to schools and social care. In this setting it is wonderful that Trafford MBC has been able to earmark £40,000 toward the repair and refurbishment of Hartley Road Gateway. That much will buy a very basic repair. We believe people want something better – something to be proud of for now and for generations to come. The most complete option produced by the stonemasons would cost over £100,000. The intermediate we are trying for will cost almost £56,000. This preferred option, (see diagram on the following page), gives good quality stonework and sections of metal railings between the pillars. The central access will be protected by retractable bollards.



The project to raise funds continues and is the main focus of our efforts at present. We have already received generous contributions from a number of individuals and from Seamons Moss Community Association. We are approaching other avenues and receiving suggestions for fund raising which we are considering. Trafford MBC has issued a Press Release to promote the project, and you can see a short video by following this link: <https://we.tl/t-WpHKBhz2e2>

We believe the renewed gateway will be good value for money. Some people wonder why such a repair is costing so much – It is because of the nature of the work. It requires high quality skills and high quality materials. Putting things into perspective- The demolition of the old toilet block, landscaping of the site and construction of a single unit toilet in 2015 cost well over £40,000 We hope for your support. Can you help to bridge the gap?

D Jolley, Hon Sec. Friends of John Leigh Park

The link to the fund raising page is:

<https://www.gofundme.com/f/hartley-road-gate-john-leigh-park-altrincham>

Or you can make a donation directly by cash or cheque payable to Friends of John Leigh Park, to Rob Kean, Treasurer FoJLP, 55 Oldfield Rd, Altrincham WA14 4BH.

If you wish to make a direct payment, the bank details are: Friends of John Leigh Park. 05-02-13 42522594



Travellers on the park in Summer 2019. A temporary barrier of stones and plastic fencing was moved into place at the gateway by friends and neighbours.

Duke of Edinburgh Award volunteers clear leaves from the Hartley Rd Entrance. They are working towards Bronze or Silver awards. They've had experience of helping in the aviary but have also contributed a great deal to tidying up fallen branches and leaves. They will be involved with horticulture when the rain stops!

Brief History:

The land on which John Leigh Park is now situated was previously the site of Oldfield Hall and its estate. After the sale of the Hall to the Earl of Stamford, it remained empty from approximately 1906-1917. The estate was purchased by John Leigh and donated to Altrincham Urban District Council in 1917 in memory of his father John Leigh senior for use as a public park. He stipulated that the land should be known as Leigh Park and kept as an open space forever. It is a 14.6 acre park, is currently a Green Flag Park and judged outstanding by the RHS 'In Your Neighbourhood' scheme.

We have no photographs or drawings of the gateway as it was originally, but local historian Leslie Turner has discovered the following in her research:

"Once the park had been purchased by John Leigh for the community it evolved over many years in order not to place too great a financial burden on the ratepayers. I was able to discover in the minutes of meeting for the Council that in 1922 a pair of second hand gates and palisades were purchased through Messrs Bethell & Sons for £18. I highly suspect these were from one of the many estates which were sold and broken down after the First World War, therefore they may have an even greater historical value. In 1924 the new entrance walk from Hartley Road was completed. And, in June 1924 the Council minutes advised that the cost of fixing 4 posts for Hartley Road gateway would be £38. Quotes for painting iron gates were sent to tender with one for £21 and another for £31 received. Finally, in January 1925 the 'new gates' were fixed and ready for painting. A lock had also been provided and was ready for use. You see it really was a very, very slow evolving process!"

Information is from the booklet "Celebrating The History of John Leigh Park", by Leslie Turner. Copies are still available, price £2 from The Friends Group, (see contact details), or from Oldfield Brow post office.



Titan Landscaping and Paving have a team with over 20 years of experience and will beat any like for like quote.

Special offer this spring with 20% off for all Friends of John Leigh Park.

Services include:

Block Paving driveways/paths
Resin Bound/Indian Stone Paving
Astro Turfing Garden Services
Fencing Jungle Tidy-Ups
Patios Lawns/Hedge Trimming
Power Cleaning

Creative designs and suggestions

Regular maintenance plans available

For a free quote contact Tom via email:

info@titanlandscaping.co.uk

or call/text 07904 076551



BOWDON
LAWN TENNIS CLUB

Bowdon L.T.C.
Tennis
Coaching
Programme
With Cheshire
Coach of the
Year 2019
Phil Spencer



- All ages and abilities welcome
- Group and individual lessons
- Cardio Tennis sessions
- Junior groups
- Senior groups
- Fully Licensed and Insured coaching team
- Holiday camps
- Fitness training
- Video analysis

To book a lesson or for more information
contact Phil Spencer 0777 3738 981
or email COACHING@BOWDONLTC.COM

**BUDENBURG BOWLING & SOCIAL CLUB
CANAL SIDE, JUBILEE WAY,
BROADHEATH, ALTRINCHAM WA14 4FB**



**LOCAL SPORTS AND SOCIAL CLUB
IN PLEASANT SURROUNDINGS
BINGO HERE EVERY WEDNESDAY
8.00PM START – ALL WELCOME!
EVERY FRIDAY, THE NEW
WEIGHTWATCHERS WORKSHOP,
9.45 TO 10.45 AM
ROOM AVAILABLE FOR HIRE
0161 928 1249**

Kung Fu & Tai Chi

IN ALTRINCHAM

Suitable For All Ages | Beginners & Families Welcome

- Kung Fu -

SATURDAY 4:00PM - 5:00PM

SUNDAY 4:00PM - 5:00PM

- Tai Chi -

TUESDAY 7:00PM - 8:00PM

SUNDAY 10:15AM - 11:15AM

Oldfield Brow Primary School Altrincham WA14 4LE

Easy to follow
Exercises

with all-round benefits to
physical & mental health



Member of the British Council
for Chinese Martial Arts

taught by **Master Chen DeQing**
3 Times Chinese National University Taij/Champion,
5 Times Chinese National University Wushu Champion

Drop-in for your free trial session, or contact us for more information.
0782 883 8081 | jinlonguk@gmail.com | www.jin-long.co.uk

Private Tuition



**Primary, GCSE & A Level
Entrance Exams**

A small team of qualified, specialist
teachers including GCSE examiners,
SEN and grammar school experience.

- One to One
- Bespoke 11 plus course
- GCSE Revision Classes
- Holiday courses

*"My son really looks forward to his
lessons; it is great to see his confidence
and writing improving"* Hayley, Parent

07879033399

info@learnnorthwest.com

www.learnnorthwest.com

Facebook: /learnnorthwest

Devonshire Road Evangelical Church

Devonshire Road Broadheath

0161 929 9364

www.altrinchamevangelicalchurch.org

REGULAR SERVICES

Sunday

10.00am Communion

(first Sunday of month – Prayer)

11.00am **Morning Service**

With Sunday Club & crèche

Wednesday (term time)

10.30-12.00 **Take-a-Break** Ladies group
Coffee morning

Saturday (term time)

11.00-12.30 **Youth Group**

(School Years 7 and up)

SPECIAL EASTER SERVICE

EASTER SUNDAY

April 12th 11.00 am

Tea/coffee served after

EVERYONE WELCOME



HEALTH WALKS IN AND AROUND THE PARK

These walks continue to be popular, and the number of walkers has grown. We meet at 10.30am every Monday at the bowling pavilion, walk for around an hour, then enjoy a cuppa afterwards at the pavilion. Follow this link to find out more about health walks in Trafford:

<https://www.walkingforhealth.org.uk/walkfinder/trafford-walk-for-health>



HIGH WINDS BRING DOWN TREE

On the morning of Sunday 9th February, a tree near the top of the park was blown down in high winds. Amey was quick to respond and the tree was removed, but we don't know how long it will take for the repair of the fence to be carried out. Amey officers are trying to discover a source to repair the fencing.



ALTRINCHAM METHODIST CHURCH

MID WEEK ACTIVITIES INCLUDE:

Parent & Toddler groups, Rainbows, Brownies, Guides, Boys Brigade

Fun, Food and Fellowship on Wednesdays 12.30 to 1pm for lunch, and lots more after lunch

Our Coffee Bar is open during term time Mon, Tues, Thurs & Fri 10am to 2pm. Everyone is welcome

Rooms available to hire for children's parties

Come and join us this Easter Services on Good Friday 10th April 10am and Easter Sunday 12th April 10.30am and 6.30pm

Our Sunday Services are 10.30 am & 6.30pm

Contact details

Church office 0161 928 0022

Email: amc.office@btconnect.com

Or visit our website:

www.altrincham-methodist.org.uk

Programme of Events 2020

March 27 th	Easter Parade	9.30am	with children from Altrincham C of E Primary School
March 30 th	Social Bowling Starts	Mondays 6.30-7.30pm Saturdays 2 – 4pm	All abilities welcome. Bowls provided
April 26 th	Battle of The Gyms	2pm	Personal trainers compete on the elements of the Trim Trail around the park
May 9 th	Spring Clean of toddlers play area	10am-11am	Bring the family to help. Cleaning materials provided
May 25 th	Stall at car boot sale St Margaret's Church Bowdon		Donations welcome. See contact details on back page
June 7 th	Big Lunch	11.30am onwards	Bring a picnic. Games and crafts for the children, Music and dance.
June 27 th	Dogs' Delight Day	2pm	Led by Altrincham and District Dog Training Society. Demonstrations and fun competitions for dogs and owners
July 5 th	Jamming on the Park 1	2pm onwards	Busking with 'Recycled', 'Old Market Tavern Buskers' and individual musicians
July 12 th	Teddy Bears' Picnic	2 – 4pm	Bring a picnic and your teddy bears for a family afternoon in the ornamental garden
August 30 th	Jamming on the Park 2	2pm onwards	Busking with 'Recycled', 'Old Market Tavern Buskers' and individual musicians
August 31 st	Stall at St Margaret's Car Boot Sale		Donations welcome. See contact details
Sept/Oct/Nov	3 Schools Cross Country Running Events	First race 10am	Dates to be announced
December 20 th	Carols On The Park	4.30pm to 5.15pm	FoJLP with Altrincham Baptist Church

THE BOWLING GREEN, ITS GARDEN AND THE PAVILION

The bowling green is another longstanding feature of John Leigh Park. The green is used by the Ladies Bowling Team and there are supported social bowling sessions on Monday evenings and Saturday afternoons during the season, which runs from April to September. During these past five years, a chestnut paling fence has been erected to reduce the destructive habits of walking across the green, and allowing dogs to run around the garden. The fencing was purchased with a grant and erected by members of FoJLP. More recently gates have been constructed and put in place, with explanatory notices – to protect the green from damage by people or dogs.

2019 and 2020 have seen a difficult and unhappy development wherein groups of teenagers – 20 or more at a time – occupy the garden to the exclusion of all others. They have spoiled the crown bowling green by playing football, rugby, riding bicycles, and sometimes simply damaging the turf on purpose using sharpened fallen branches. Friends of John Leigh Park talk with these young people. We have had correspondence and conversations with schools and police, yet the problem remains and threatens to continue on any day when there is reasonable weather throughout the year. The bowling green will become unplayable.

At present the only option which seems likely to stop the damage, is to erect a nine foot fence with locked gates around the green. This would change the character of the park, exclude ordinary people from informal use and enjoyment of its garden, and cost a huge amount of money. We are shamed to have to consider this for the first time in the park's 103 year history

David Jolley, Hon Sec Friends of John Leigh Park



The John Leigh Park Ladies' Bowling Team meets on Wednesday afternoons in the Summer Months.



The Friends group organises social bowling during the Spring and Summer months on Monday evenings and Saturday afternoons, starting on 30th March, 6.30 – 7.30pm, and Saturdays 2-4pm All abilities welcome. Bowls provided.

Exciting 0-45 music classes
are here in Altrincham



LITTLE GROOVERS

learning through music

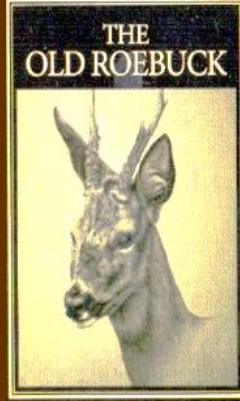
Contact us to book
a FREE taster

Thursdays at The Hub Community
Centre, Pownall Road, Altrincham
9.30-10.10am & 10.20-11am

Tel: 07973 875 168

or email liz@little-groovers.co.uk
www.little-groovers.co.uk

Our sessions are led
by an experienced musician -
and most of all they're FUN!



42 VICTORIA ST
ALTRINCHAM
WA14 1ET
Tel: 0161 928
2755

@THEROEBUCK
/theroebuckaltrincham

Web:

www.theroebuckaltrincham.co.uk

ALL HOME - COOKED FOOD
MON-SAT 12 NOON – 9.30PM
SUNDAY 12 NOON – 4PM

Altrincham Autos



enquiries@altrinchamautos.co.uk

Brakes
Bulbs
Clutches

Diagnostics
Exhausts
Servicing

Tyres
Welding
Wipers

MOT

0161 929 4964 - 07826460371



Quay House, Viaduct Road, Altrincham, WA14 5DU

contact us



@JohnLeighPark



/FriendsofJohnLeighPark



johnleighpark

Tel: 07976018418

Email:

friendsofjohnleighpark@gmail.com

Website:

www.johnleighpark.org.uk